

## **Fakahatchee Strand Preserve State Park – Swamp Tromp**

Date: **Friday**, January 13, 2012

Focus: **Wildlife** – This field trip will focus on the wildlife, habitat and ecology of the area visited and is NOT primarily a birding field trip.

Field Trip Description: Explore a unique swamp forest with Park Biologist Mike Owen. The interior of the Fakahatchee Strand supports a rich growth of tropical plants. Many birds and animals inhabit the swamp; Red-shouldered Hawk, Belted Kingfisher, , Red-bellied Woodpecker, Pileated Woodpecker, Barred Owl, Common Ground Dove, Great Egret, White Ibis, Limpkin, Florida black bear, river otter, Everglades mink and the endangered Florida Panther. Since there is no path, participants wade through cypress forest and popash-pondapple sloughs in water from 1 to 3 feet deep!

Maximum Group Size: 15

Time Begin: 9:00 am

Time End: 1:00 pm

Where to Meet: Meet at **8:45 am** in front of the Park Office/Ranger Station off Jane's Scenic Drive (Copeland, Florida).

Directions to Meeting Place:

**From I-75 (Alligator Alley):** Take Exit 80 and go south on SR-29 approximately 14 miles. Then turn right (west) at Copeland on CR 837 W (Janes Memorial Scenic Drive) and follow the paved road to the right (north) for 1 mile to Coastline Drive, about 200 feet past the Copeland fire tower. The Fakahatchee Park Office/Ranger Station is a small brown building on your right.

**From CR 951 (Collier Blvd) & US 41 (Tamiami Trail):** Travel East on US41 (Tamiami Trail) toward Miami for 24 miles to SR29. Then turn left (North) on SR29 and proceed for 2.5 miles. Turn left (West) at Copeland on CR837 W (Janes Memorial Scenic Drive) and follow the paved road to the right (north) for 1 mile to Coastline Drive, about 200 feet past the Copeland fire tower. The Fakahatchee Park Office/Ranger Station is a small brown building on your right.

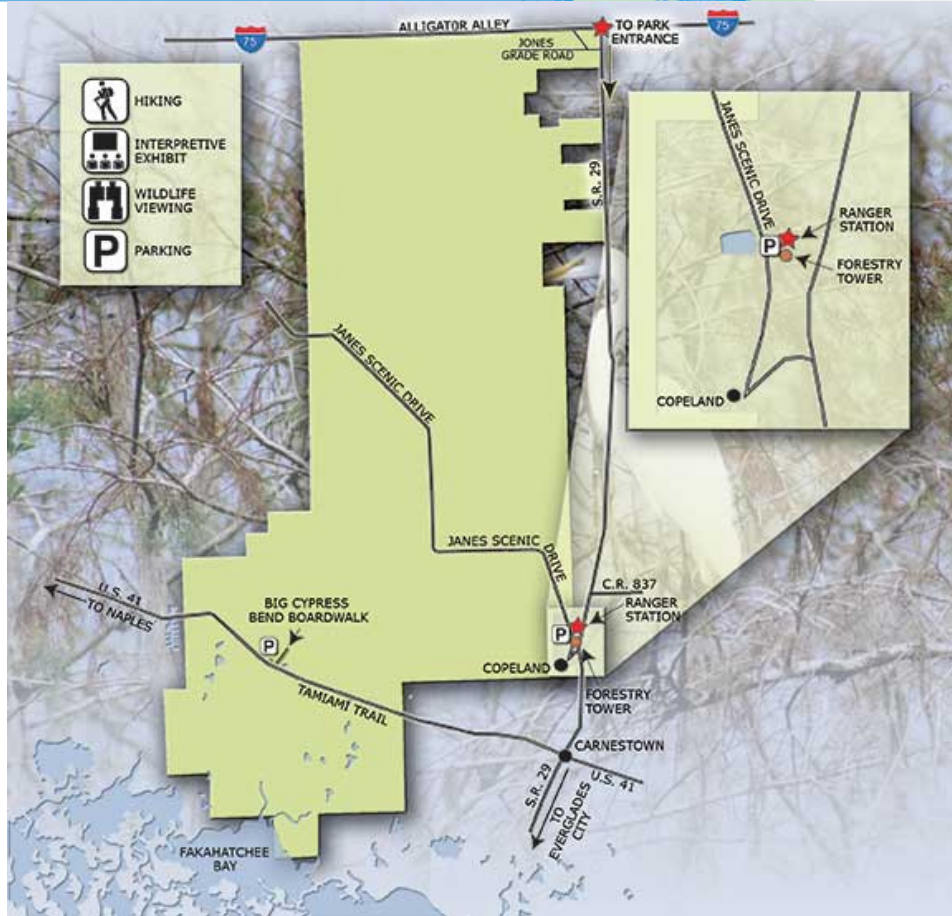


Maps:



© 2007 Yahoo! Inc.

Data © 2007 Navteq, TeleAtlas



Trip Leader: Mike Owen, Biologist, Fakahatchee Strand Preserve State Park

Field Trip Cost: \$10

Additional Information: Restrooms are available at the Park Office

What to Bring: Water, snacks and lunch for thirst and energy as a four-hour "wade" can be strenuous. Mosquito repellent, a waterproof camera and a small backpack are also recommended. Put anything you don't want to get wet inside a waterproof bag or a "zip lock" plastic bag.

What to Wear: **Prepare to get wet. Long pants and secure footwear (lace-up boots or sneakers) are necessary.** Slip-on waders are not recommended. Also bring a long-sleeved shirt and a hat. A change of dry clothes and dry footwear will make the drive home more comfortable.

Web:

<http://www.floridastateparks.org/fakahatcheestrand/>

[http://sofia.usgs.gov/virtual\\_tour/fakahatchee/index.html](http://sofia.usgs.gov/virtual_tour/fakahatchee/index.html)

Revised: 10/12/11

